



KONICA MINOLTA

AccurioPress  
C84hc/C74hc

# VIVID COLOURS BEYOND IMAGINATION

EXPERIENCE OUTSTANDING  
PRINTING QUALITY AND  
REALISTIC BEAUTY

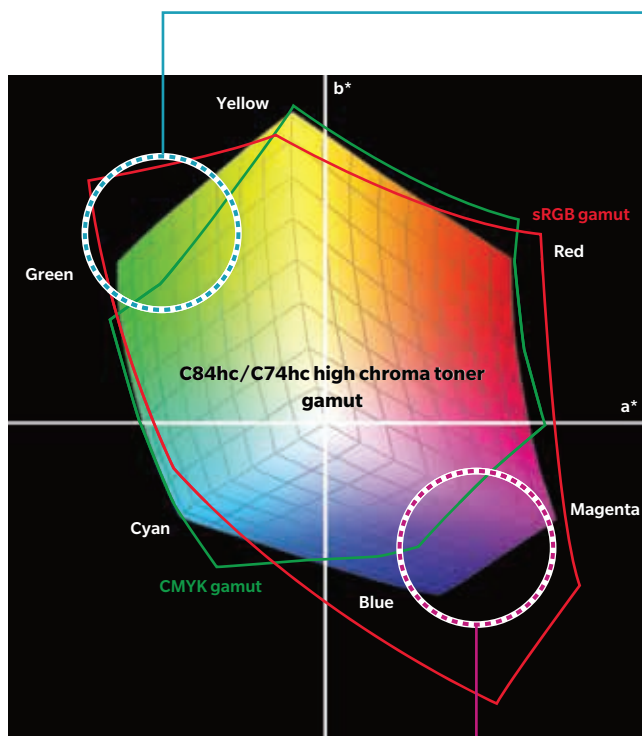


Giving Shape to Ideas

# THE POWER OF ACCURACY

## Print images with stunning colour replication thanks to a broader colour gamut

Recreating images accurately, just as you captured them, is not always possible with conventional CMYK inks and toners. The AccurioPress C84hc/C74hc has been uniquely engineered to solve this problem and bring your customers' work to life complete with its original vibrancy.

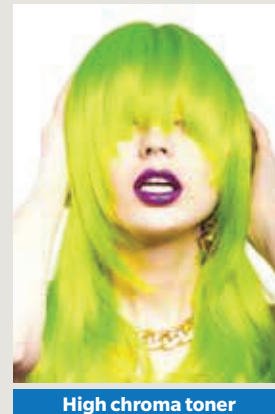


### CLEAR, BRIGHT BLUES AND GREENS

Reproducing brighter shades using conventional CMYK toners often leads to lost colour density. Conversely, reproducing dense colours can lead to loss of brightness. High chroma cyan toner enables colours to be reproduced with their original clarity and brightness, especially for blue and green shades.



CMYK toner



High chroma toner

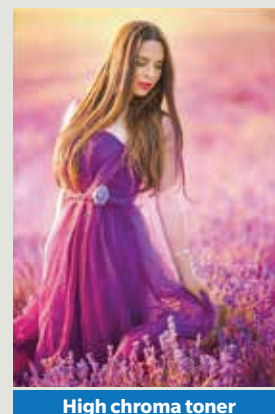
Actual image scanned on an office MFP. If this catalogue is printed using conventional CMYK toner, the difference between the two images will be minimal.

### VIBRANT PINK AND BRILLIANT PURPLE

When printing with conventional CMYK toner, there is often an obvious difference between the printed image and how it appears on an RGB digital display. High chroma magenta toner maintains clarity and vibrancy across a wider spectrum of pinks and purples. One specific example is pink and purple flowers, which often look muddy when printed, a phenomenon that has led many designers and illustrators to abandon use of pinks and purples in their work. High chroma toner solves this problem, creating smooth and clear skin tones with less graining and bright, eye-catching design elements for posters and mail items.



CMYK toner



High chroma toner

Actual image scanned on an office MFP.

# SPECIALISED PRINT MODES MAXIMISE HIGH CHROMA BENEFITS

Choose between Saturation Mode, which utilises the full colour range of high chroma toner and creates a vibrant range of colours impossible with conventional CMYK printing, or Standard Mode to optimise reproduction of images close to traditional CMYK with reduced saturation. Select the mode to best suit the needs of each print job.





# SUPERIOR QUALITY

**Advanced technology that provides stable, high-quality printing for beautiful results every time**

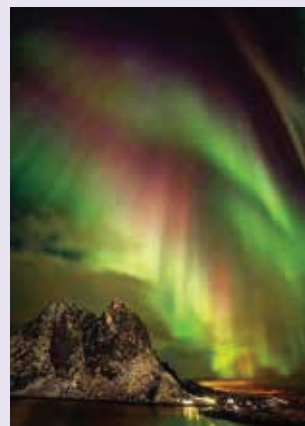
Quality without equal. The AccurioPress C84hc/C74hc combines cutting-edge printing technologies into one production-print machine, providing outstanding quality at high speed.



## BROADEN YOUR HORIZONS WITH STRIKINGLY REALISTIC IMAGES

### Make an Impression with Innovative PR

Create smooth, blemish free skin tones within your prints thanks to higher colour saturation than conventional CMYK toners. The broader range of the pigments in high chroma toners leads to less graining, reduced blemishes and smoother skin, making it ideal for studio photography, photobook printing and high-quality materials for the cosmetics and fashion industries.



### Get Your Message Across

Reproducing colours that are impossible with conventional CMYK toner is the major benefit of high-chroma printing. The purple of a sunset, the pink of a petal or the brilliance of high-key blue or green are replicated perfectly, allowing photographers and designers to have their work faithfully reproduced in print. This is also an important benefit for the fashion industry and catalogue photography where accurate colour representation of products is vital.

### HIGH-SPEED 81/71 PPM OUTPUT

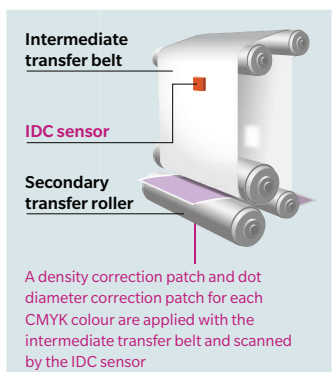
Move customer projects through quickly with speeds of up to 81/71 ppm for A4 and 45/39 ppm for A3. Productivity at these speeds is consistent on paper up to 216 gsm.

### HIGH-RESOLUTION EQUIVALENT TO 3,600 DPI

High-resolution 2,400 dpi equivalent to 3,600 dpi quality. Improved image processing and an 8-beam LD (laser diode) enable the AccurioPress C84hc/C74hc to maintain its speed even when printing in higher resolutions.

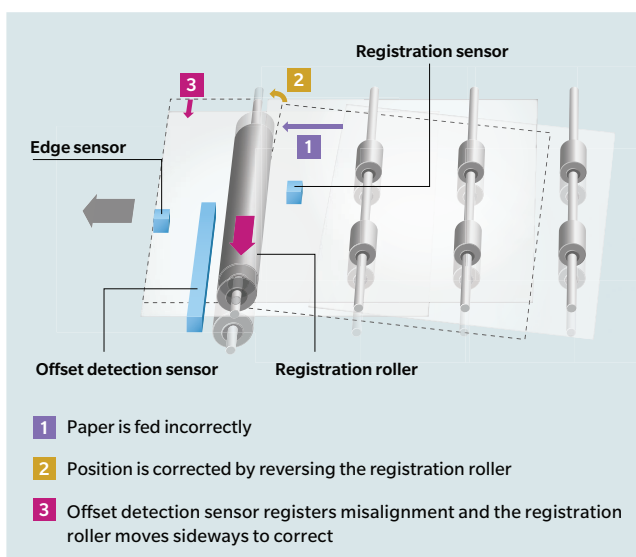
### REAL-TIME IMAGE STABILIZATION

The IDC sensor detects areas in need of correction on the intermediate transfer belt, defining them as one of two categories. This enables speedy correction and stable printing which maintains high quality. This function only operates when Image Correction Priority is selected.



## HIGH-PRECISION PAPER POSITIONING

Paper position is detected and corrected using a registration-swing mechanism which automatically corrects any misalignment in paper fed from the main tray, helping to improve overall productivity as well as print quality.

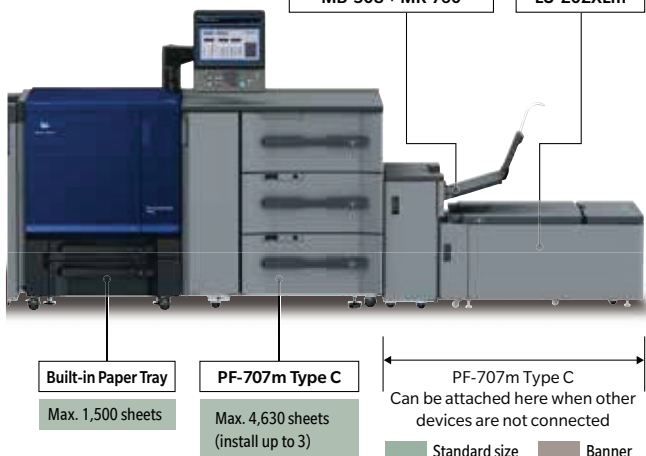


## LARGE CAPACITY LOADING FOR REGULAR AND BANNER PAPER

Avoid the hassle of paper replenishment with the PF-707m Type C,\*<sup>1</sup> a three-tier 15,390-sheet-capacity loader using air suction to reliably feed even large-size, heavy-stock or slippery paper. For banner paper, add the LU-202XLm,\*<sup>1</sup> capable of loading up to 1,000 sheets of paper up to 762 mm in length. Combine options to build a flexible system best suited to your print needs.

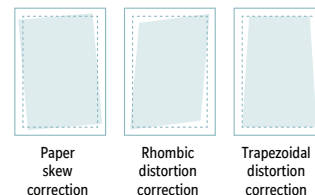
All load estimates are calculated using 80 gsm paper  
\*1. Optional  
\*2. 250 sheets cannot be loaded when MK-760 is attached

|   |                                    |
|---|------------------------------------|
| Max. 250 sheets* <sup>2</sup>                       | Max. 2,500 sheets                  |
| Up to 1,200 mm: 10 sheets<br>Over 1,201 mm: 1 sheet | Up to 762 mm:<br>Max. 1,000 sheets |
| MB-508 + MK-760                                     | LU-202XLm                          |



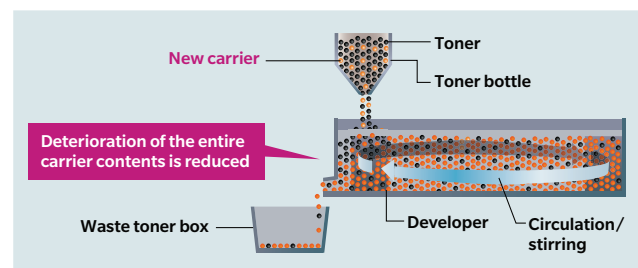
## DOUBLE-SIDED REGISTRATION FOR ACCURATE ALIGNMENT

Image adjustment to the front and back sides corrects skewed paper and trapezoidal or rhombic distortion. The system delivers consistent quality, virtually eliminating image misalignment on double-sided printing.



## CONSISTENT, AUTO-REFINING DEVELOPMENT SYSTEM

Image quality remains stable without constant monitoring of toner carrier in the machine. New carrier is added alongside new toner, keeping the development process stable and extending the overall lifetime of the developer. Maintenance downtime is significantly reduced.



## CHOOSE THE OPTIONAL CONTROLLER TO OPTIMISE YOUR OUTPUT NEEDS

Select the optional controller that suits your workflow and helps answer your customers' needs. High-speed RIP processing, advanced colour management, high-data-volume capability, all available with controllers that support the productivity of the AccurioPress C84hc/C74hc.

### PDF Compatible APPE Output (Optional)

The controller is equipped with Adobe's APPE rendering engine. Process PDFs directly without using a print driver to preserve their original transparency effects.

## OUTPUT PRINT JOBS DIRECTLY USING HOT FOLDERS

Simply drag and drop your PDFs or TIFF files to the icon or shared folder to send to print without opening any applications. Create multiple Hot Folder icons for each of your frequently used print settings so you can quickly and easily go to print without needing to input any settings.

# STAY PRODUCTIVE

## Automated regulation for flawless prints at a faster pace

Add the optional Intelligent Quality Optimiser IQ-501 to automate colour management and registration adjustment for front and back sides. This significantly reduces time spent on manual adjustments and improves overall productivity. Automated inspection as well as real-time monitoring and adjustment throughout print jobs ensures that quality is maintained from start to finish.

### AUTOMATIC COLOUR MANAGEMENT AND POSITION ADJUSTMENT

With the optional Quality Optimizer IQ-501, all colour management and front and back side paper registration adjustments are done automatically. Even non-specialist personnel can make optimal adjustments quickly as traditional manual measurements and numerical inputs are no longer required, reducing idle time and issues resulting from human error.

### INTELLIGENT MEDIA SENSOR IM-101 (OPTIONAL)

Measure paper thickness and weight, and select from the suitable paper profiles displayed on the operation panel. Easy and the work of moments, print jobs progress with optimised settings, avoiding risk of errors caused by manual input.

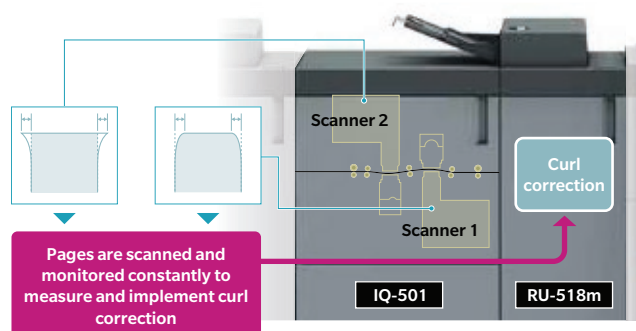


### ADJUSTMENTS MADE EASY WITH THE INTUITIVE OPERATION WIZARD

Perform routine tuning tasks from the intuitive settings screen which provides one-step adjustment with no hassle. Optimise gamma value, maximum density, colour balance, gradation and grey balance settings in one easy step. Requires optional IQ-501 and VI-514.

### AUTOMATIC CURL CORRECTION AND QUALITY INSPECTION THROUGHOUT PRINT JOBS

Paper curl is monitored by the Intelligent Quality Optimiser IQ-501 and when needed, the curl corrector installed within the Relay Unit RU-518m is activated. IQ-501 and RU-518m units are optional.





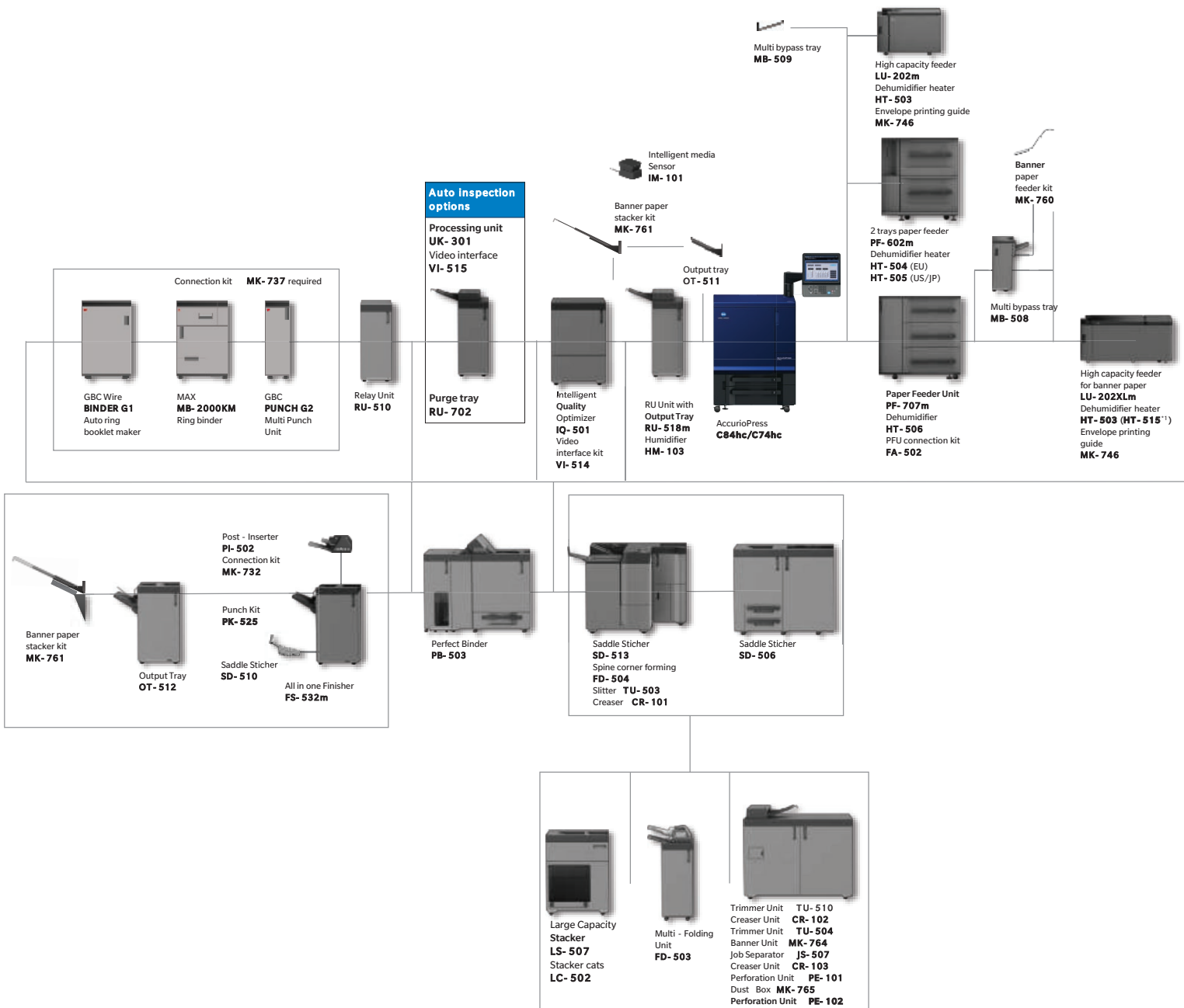
## System Configuration

### Options for printer body

Working table WT - 511  
 Pat-light MK-744C  
 IC card authentication AU-201S  
 Dehumidifier heater for printer tray HT-511  
 Fusing unit for envelope printing EF-107

### Controller

Konica Minolta Embedded Controller IC-609 APPE kit UK-220  
 Fiery Controller (Server type) IC-317  
 Fiery Controller (Embedded type) IC-419  
 Video interface kit VI-515



\*1: When connected to PF-707 m (US/JP)

# AccurioPress C84hc/C74hc General Specifications

| Main Unit   | C84hc   | C74hc  |                                    |
|---|---|--|------------------------------------|
| Type  | Console type  |  |                                    |
| Colour support  | Full colour   |  |                                    |
| Writing resolution  | Equivalent to 3600 dpi x 2400 dpi   |  |                                    |
| Gradation   | 8 bit / 256 gradation   |  |                                    |
| Warm-up time  | 390 sec. or less  |  |                                    |
| Magnification   | 25 - 400%, in 0.1% steps  |  |                                    |
| Print speed full colour & monochrome                      | 81 ppm (A4 Landscape) / 45 ppm (A3)   | 71 ppm (A4 Landscape) / 39 ppm (A3)  |                                    |
| First Copy/Printing Time (Color/Monochrome)               | 6.1 seconds or less/4.0 seconds or less   |  |                                    |
| Paper size  | 100 x 148 - 330.2 x 487.7 mm (up to 1,300 mm with optional Banner Kit)  |  |                                    |
| Paper weight  | 62 - 360 gsm  |  |                                    |
| Paper capacity  | 15,390 sheets (with main body standard tray + 3 paper feeding units (PF-707m Type C))   |  |                                    |
| Paper weight  | 12,000 sheets (with Large Capacity Stacker LS-507 x 2)  |  |                                    |
| Controller CPU  | Intel Core i5-6500 3.2GHz <sup>1</sup>  |  |                                    |
| Power supply  | AC 200V, 25A, 50Hz/60Hz (Voltage to ground 100V)  |  |                                    |
| Maximum Power Consumption                                 | 5,760W  |  |                                    |
| Main Unit Size (WxDxH mm)                                 | Main unit   | 31.50 x 35.55 x 40.98 inches (800 x 903 x 1,041 mm)  |                                    |
|   | (Recommended) configuration   | 84.65 x 35.55 x 58.19 inches (2,150 x 903 x 1,478 mm)<br>(main unit + LU-202m + FS-532m)   |                                    |
| Main Unit Weight  | Approx. 672.41 lb (305 kg)  |  |                                    |
| Maximum Print Area  | 12.72 x 18.90 inches (323 x 480 mm) (Banner sheet: 12.72 x 50.98 inches (323 x 1,295 mm))   |  |                                    |
| Compatible Paper weights                                  | Main unit   | 16 to 68 lb (62 to 256 <sup>2</sup> g/m <sup>2</sup> )   |                                    |
|   | Paper feed  | PF-707m: 16 to 95 lb (62 to 360 g/m <sup>2</sup> )<br>MB-508: 16 to 81 lb (62 to 300 g/m <sup>2</sup> )  |                                    |
|   | Paper output  | Straight paper output: 16 to 95 lb (62 to 360 g/m <sup>2</sup> )<br>Reverse double-sided output: 16 to 95 lb (62 to 360 g/m <sup>2</sup> )   |                                    |
|   | Banner paper  | MK-760/MK-761: 34 to 68 lb (128 to 256 g/m <sup>2</sup> )<br>(up to 51.18 inches (1,300 mm) length)<br>LU-202XLm: 34 to 68 lb (128 to 256 g/m <sup>2</sup> )<br>(18.85 to 30.00 inches (478.8 to 762 mm) length) |                                    |
| Paper Feed Capacity (21 lb (80 g/m <sup>2</sup> sheet))   | PF-707m: 3-level tray, air suction system<br>Top level/Middle level: 1,390 sheets each,<br>Bottom level: 1,850 sheets<br>15,390 sheets<br>(Main unit tray, with 3 PF units connected) |  |                                    |
| Paper output capacity (21 lb (80 g/m <sup>2</sup> sheet)) | RU-518m (Sub Tray) 100 sheets (stacking height: 20 mm)  |  |                                    |
| Copy Speed  | Single side A4  | 81 ppm or 4,399 sides or more/hour   | 71 ppm or 3,848 sides or more/hour |
|   | Simplex A3  | 45 ppm or 2,404 pph  | 39 ppm/ 2,074 pph                  |
| Compatible Controllers                                    | IC-609 (KM), IC-317 ver.3.0 (Fiery), IC-419 ver.3.0 (Fiery)   |  |                                    |

\*1: In the case of Image Controller IC-609

\*2: For 58 to 68 lb (217 to 256 g/m<sup>2</sup>), only papers that are at least 8.27 to 11 inches (210 x 279.4 mm)

## Other options

|                          |         |
|--------------------------|---------|
| Working Table            | WT-511  |
| Envelope Fusing Unit     | EF-107  |
| Dehumidifier Heater      | HT-511  |
| Status indicator light   | MK-744C |
| Intelligent Media Sensor | IM-101  |

- All specifications refer to A4-size paper of 80 gsm quality.
- The support and availability of the listed specifications and functionalities varies depending on operating systems, applications and network protocols as well as network and system configurations.
- Some of the product illustrations contain optional accessories.
- Specifications and accessories are based on the information available at the time of printing and are subject to change without notice.
- Konica Minolta does not warrant that any prices or specifications mentioned will be error-free.
- All brand and product names may be registered trademarks or trademarks of their respective holders and are hereby acknowledged.

## Paper feeding options

|   |           |
|---|-----------|
| Paper Feeder Unit                         | PF-602m   |
| Dehumidifier Heater (Europa)              | HT-504    |
| Dehumidifier Heater (Japan/North America) | HT-505    |
| Paper Feed Unit                           | PF-707m   |
| Dehumidifier Heater                       | HT-506    |
| Feed Adjuster                             | FA-502    |
| Multi Bypass Tray                         | MB-508    |
| Large Capacity Unit                       | LU-202m   |
| Large Capacity Unit                       | LU-202XLm |
| Dehumidifier Heater                       | HT-503    |
| Dehumidifier Heater                       | HT-515    |
| Mount Kit                                 | MK-746    |
| Multi Bypass Tray                         | MB-509    |
| Banner Tray Unit (Input)                  | MK-760    |

## Paper ejection options

|   |         |
|---|---------|
| Finisher  | FS-532m |
| Saddle Stitcher                                   | SD-510  |
| Punch Unit  | PK-525  |
| Mount Kit   | MK-732  |
| Post Inserter                                     | PI-502  |
| Saddle Stitcher                                   | SD-506  |
| Saddle Stitcher                                   | SD-513  |
| Folding Unit                                      | FD-504  |
| Creaser Unit                                      | CR-101  |
| Trimmer Unit                                      | TU-503  |
| Large Capacity Stacker                            | LS-507  |
| Large Capacity Stacker Handcart                   | LC-502  |
| Trimmer Unit                                      | TU-510  |
| Creaser Unit                                      | CR-102  |
| Trimmer Unit                                      | TU-504  |
| Banner Unit                                       | MK-764  |
| Job Separator                                     | JS-507  |
| Creaser   | CR-103  |
| Perforation Unit                                  | PE-101  |
| Perforation Unit                                  | PE-102  |
| Dust Box  | MK-765  |
| Folding Unit                                      | FD-503  |
| Perfect Binder                                    | PB-503  |
| Output Tray                                       | OT-512  |
| Output Tray                                       | OT-511  |
| Mount Kit   | MK-737  |
| Relay Unit  | RU-510  |
| Relay Unit  | RU-518m |
| Humidifier  | HM-103  |
| Intelligent Quality Optimizer                     | IQ-501  |
| Relay Unit  | RU-702  |
| Auto Inspection Unit                              | UK-301  |
| Inspection Enhancement Kit                        | UK-311  |
| Variable Data Inspection Kit                      | UK-312  |
| Video Interface Kit (Essential option for IQ-501) | VI-514  |
| Banner Tray Unit (Output)                         | MK-761  |

## Electronic options

|   |         |
|---|---------|
| Image Controller (KM)   | IC-609  |
| Upgrade Kit   | UK-220  |
| Image Controller (Fiery)  | IC-317  |
| Image Controller (Fiery)  | IC-419  |
| Video Interface Kit (Essential option for IC-317/IC-419/UK-301) | VI-515  |
| Authentication Unit   | AU-201S |



Konica Minolta Business Solutions India Pvt. Ltd.

Building No: 8, Tower-C, 10th Floor, DLF Cyber City, Phase-2, Gurugram, Haryana-122002, India | Board No. +91-124-6652000

URL: www.konicaminolta.in | marcom@bin.konicaminolta.in

Connect with us: